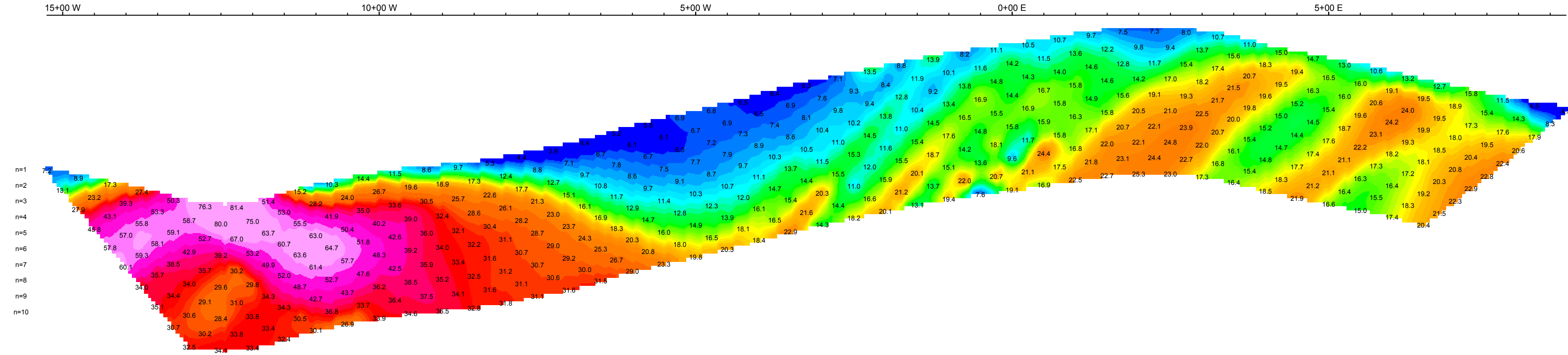
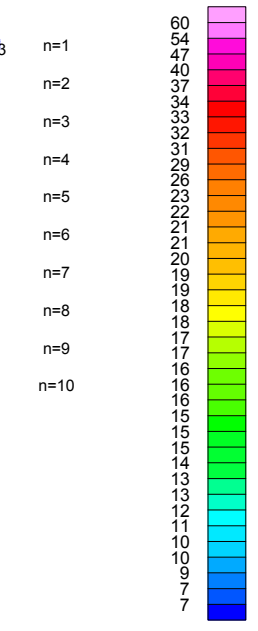


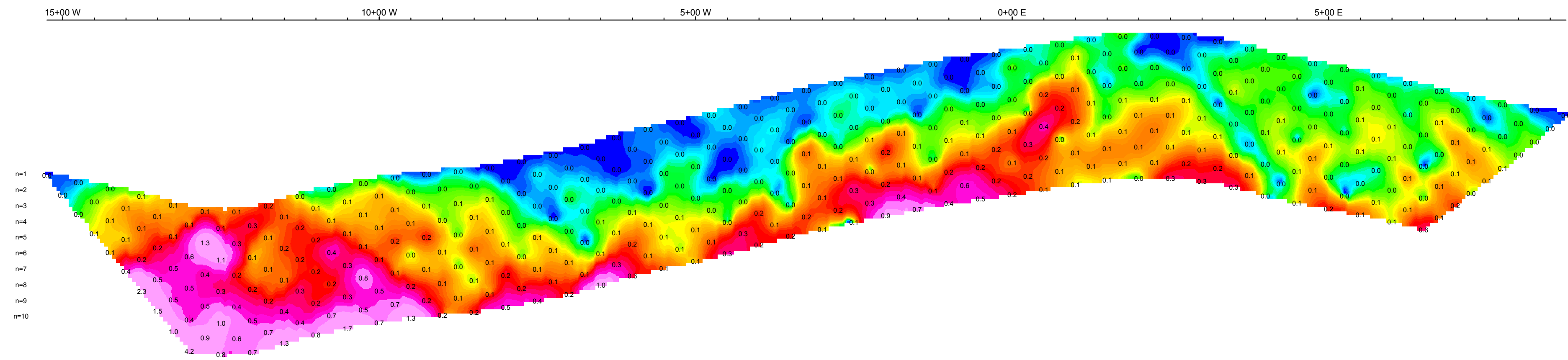
IP_FINAL



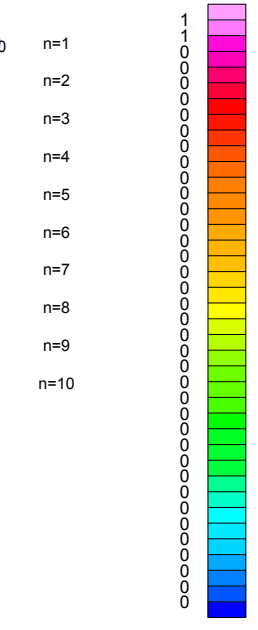
IP_FINAL



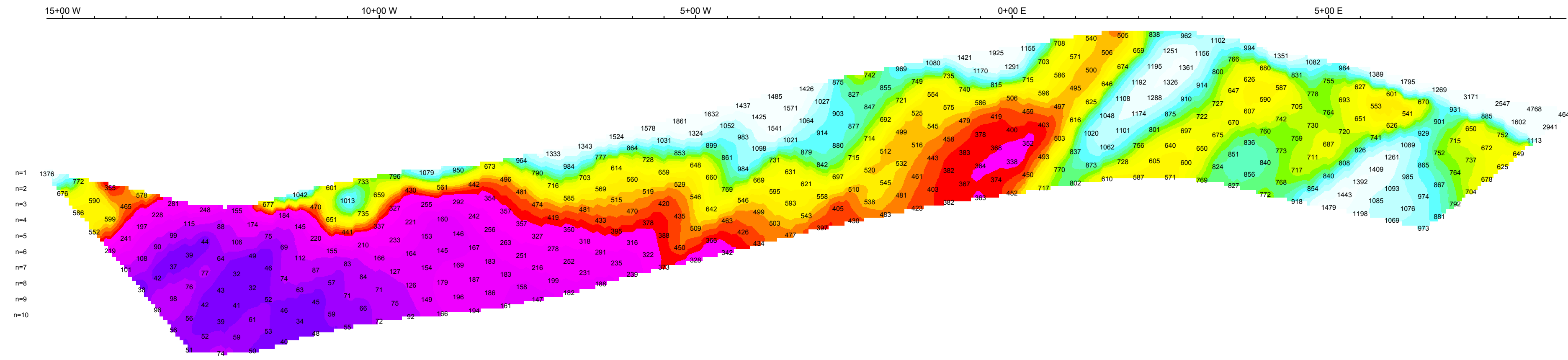
IPerr_FINAL



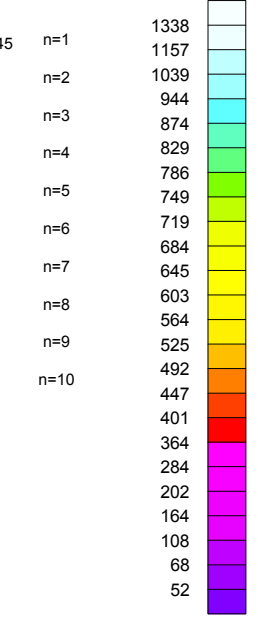
IPerr_FINAL



App. resistivity
Ohm*m

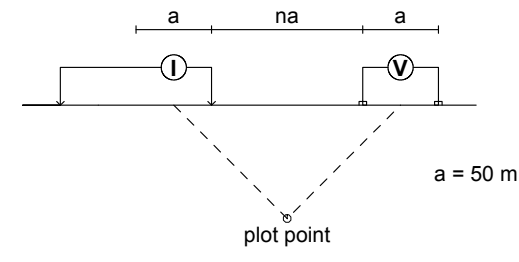


App. resistivity
Ohm*m



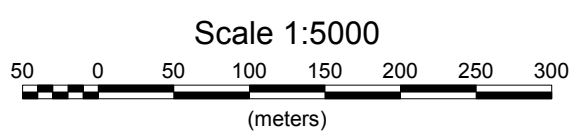
PSEUDOSECTION PLOTS L7+50 N

Modified Dipole-Dipole Array



Stationary electrode at 1600W and 550W (moving W).
Receiver: GDD IP Receiver GRx16
Transmitter: GDD Tx-II 3.6kW
Data File: Miller Creek IP.xyz
Dates Surveyed : Aug 23 - 24, 2011

FIELD



RADIUS GOLD CORP.

60 MILE PROJECT
MILLER CREEK ZONE
L7+50 N PSEUDOSECTION PLOTS

DAWSON MINING DISTRICT, YUKON, CANADA
NTS : 116C 02
DATE SURVEYED : AUG 2011
DRAWN BY: AL / DATE DRAWN: AUG 28

AURORA GEOSCIENCES LTD.